

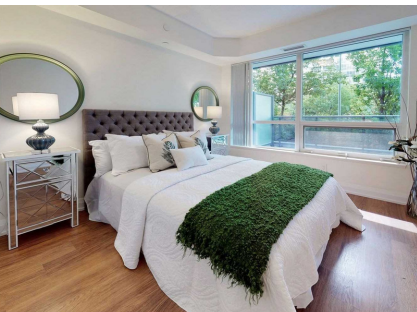
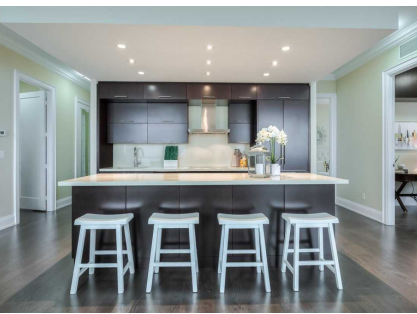


HULLMARK CENTRE

5 Sheppard Ave. E & 2 Anndale Dr., North York, ON

SUITE TYPES

- ✓ 1 Bedroom ✓ 2 Bedroom
- ✓ 1 Bedroom + Den ✓ 2 Bedroom + Den



Designed For Natural Living

Hullmark Centre twin towers are located near Sheppard Avenue East and Yonge Street in North York's Willowdale East neighbourhood. Guests of the buildings can enjoy a wide variety of amenities, including a fitness centre, outdoor pool, common rooftop deck to socialize and mingle with friends and neighbours. There is a concierge desk, along with a media room, meeting room, an outdoor patio, and garden, games room, and much more.

Enjoy gorgeous North Toronto living with convenient and easy access to Toronto's subway line, Whole Foods, shopping, outdoor space, and restaurants are within walking distance. Minutes to highway 401 and highway 404 means there are instant connections to anywhere in the city.

SUITE FEATURES

- ✓ Fully Equipped Kitchen
- ✓ In Suite Washer & Dryer
- ✓ Workspace
- ✓ Internet & Wi-Fi
- ✓ Cable Package
- ✓ Smoke Free Environment
- ✓ Towels & Linens
- ✓ Pet Friendly
- ✓ Balcony

PROPERTY FEATURES

- ✓ 24 Hour Concierge
- ✓ Roof-Top Deck
- ✓ Media Room
- ✓ Fitness Centre
- ✓ Meeting Room
- ✓ Recreation Room
- ✓ Visitors Lounge
- ✓ Outdoor Patio
- ✓ Sauna
- ✓ Party Room
- ✓ Outdoor Pool
- ✓ Parking On Site
- ✓ Minimum 30 Nights