



## THE HUDSON

610 Granville St, Vancouver, BC

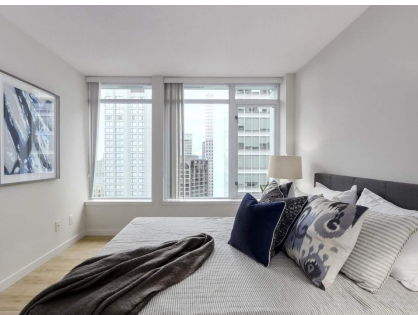
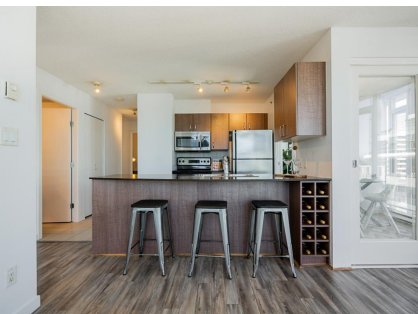
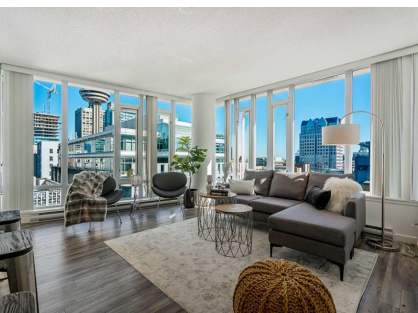
### SUITE TYPES

- ✓ 1 Bedroom
- ✓ 2 Bedroom
- ✓ 1 Bedroom + Den
- ✓ 2 Bedroom + Den

## Designed For Natural Living

The Hudson is a 32 storey condominium built in 2006 and is situated in the heart of downtown Vancouver. The Hudson is located directly onto the Granville Skytrain Station and features private access to the station, allowing entry to the Pacific Centre Shopping Mall, multiple restaurants, and amenities. Set in the core of downtown Vancouver and surrounded by some of the most sought-after neighbourhoods; you can explore Yaletown, Coal Harbour, and Gastown, all within a 10-minute walk.

While staying at The Hudson you can enjoy fabulous amenities that enhance your living, including a fully-equipped fitness centre, a games room, party room, and an outdoor garden patio that are ideal for socializing with friends and neighbours.



### SUITE FEATURES

- ✓ Fully Equipped Kitchen
- ✓ In Suite Washer & Dryer
- ✓ Workspace
- ✓ Internet & Wi-Fi
- ✓ Cable Package
- ✓ Smoke Free Environment
- ✓ Towels & Linens
- ✓ Balcony
- ✓ Pet Friendly
- ✓ Central Air Conditioning

### PROPERTY FEATURES

- ✓ On Site Concierge
- ✓ On Site Parking
- ✓ Outdoor Garden Patio
- ✓ Fitness Centre
- ✓ Games Room
- ✓ Party Room
- ✓ Meeting Room
- ✓ Elevator
- ✓ Minimum 30 Nights