



## GUILDWOOD WAY TOWNHOUSES

4620 Guildwood Way, Mississauga, ON

### SUITE TYPES

- ✓ 1 Bedroom
- ✓ 2 Bedroom
- ✓ 3 Bedroom

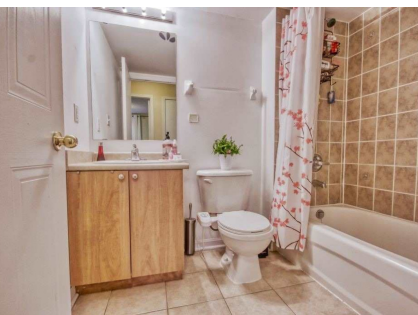
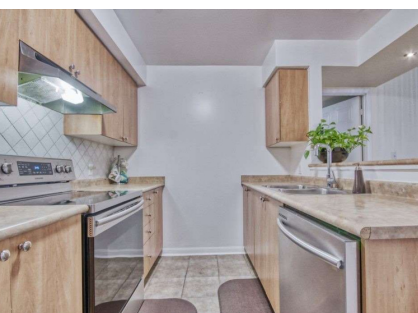
## Designed For Natural Living

These modern townhomes in central Mississauga are chic and fully equipped with all amenities. They have direct outdoor access with no stairs to climb or elevators to wait for.

Mississauga lies on the shores of Lake Ontario, Toronto to one side and Oakville to the other. The city is known for its picturesque harbours, vibrant shopping districts, the active arts community, and some of the best dining options in the Greater Toronto Area.

Mississauga is Canada's sixth-largest city, featuring cultures worldwide, well-established neighbourhoods and infrastructure, and safe streets. Mississauga is conveniently located 30km from downtown Toronto, with easy highway access.

The city is green with 481 parks and woodlands with tranquil settings. It is also home to Square One Shopping Centre, the largest shopping centre in Ontario and the second largest in Canada.



### SUITE FEATURES

- ✓ Fully Equipped Kitchen
- ✓ In Suite Washer & Dryer
- ✓ Internet & Wi-Fi
- ✓ Cable Package
- ✓ Smoke Free Environment
- ✓ Towels & Linens
- ✓ Pet Friendly
- ✓ Private Patio

### PROPERTY FEATURES

- ✓ Controlled Access
- ✓ Backyard Or Open Space
- ✓ Central Air Conditioning
- ✓ Amenities
- ✓ Parking On Site
- ✓ Minimum 30 Nights
- ✓ Visitors Parking